

Treppenhaus
BF. 20.50

Reduit
BF. 3.40

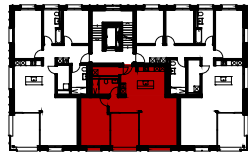
Entrée
BF. 5.40

Dusche
BF. 5.30

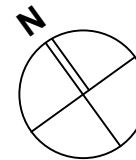
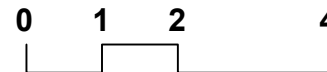
Essen / Wohnen
BF. 39.60

Zimmer
BF. 17.20

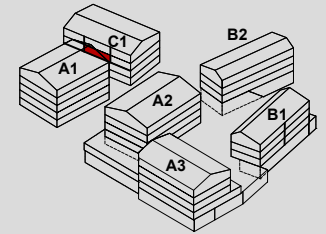
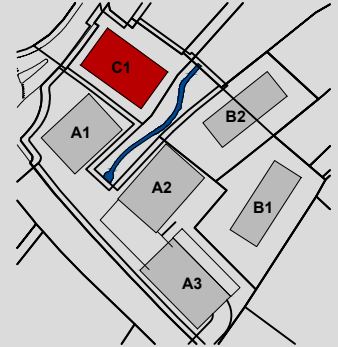
Loggia
BF. 11.60



Obergeschoss



TU Bauherr



Wohnung Typ C1 / 2.2

Zimmer	2.5
Wohnung GF	81.90 m ²
Wohnung NF	70.90 m ²
Loggia	11.60 m ²
Keller	7.10 m ²

Erstvermietung

THOMA[®]
IMMOBILIEN TREUHAND

Bahnhofstrasse 13a
8580 Amriswil
T 071 414 50 40
erstvermietung@thoma-immo.ch